

How to Download and Install GOM Inspect (Viewer)

GOM Inspect is a 3D inspection and measurement software created by GOM. It allows users to evaluate the overall quality of their manufactured parts through comparing CAD models against 3D scan data and creating complete inspection plans using its comprehensive list of inspection tools. There are additional workspaces with tools dedicated for further operations within the software, including Mesh Editing and Reporting.

GOM Inspect is available as a free download from the GOM website. A paid professional version of the software is also available for users looking to take advantage of the additional software functionalities. A more detailed list of the features contained in GOM Inspect and the Professional version can be found in the [GOM Inspect official website](#).

For users looking to download and install the free Viewer version of the software for the first time, this guide will provide all the necessary steps to get started. Prior to beginning the installation process, consult the system requirements of the latest GOM Inspect software, and ensure that administrative privileges have been granted to the PC's user account.

Minimum System Requirements (GOM Suite 2021)

CPU: Intel Core i3 processor

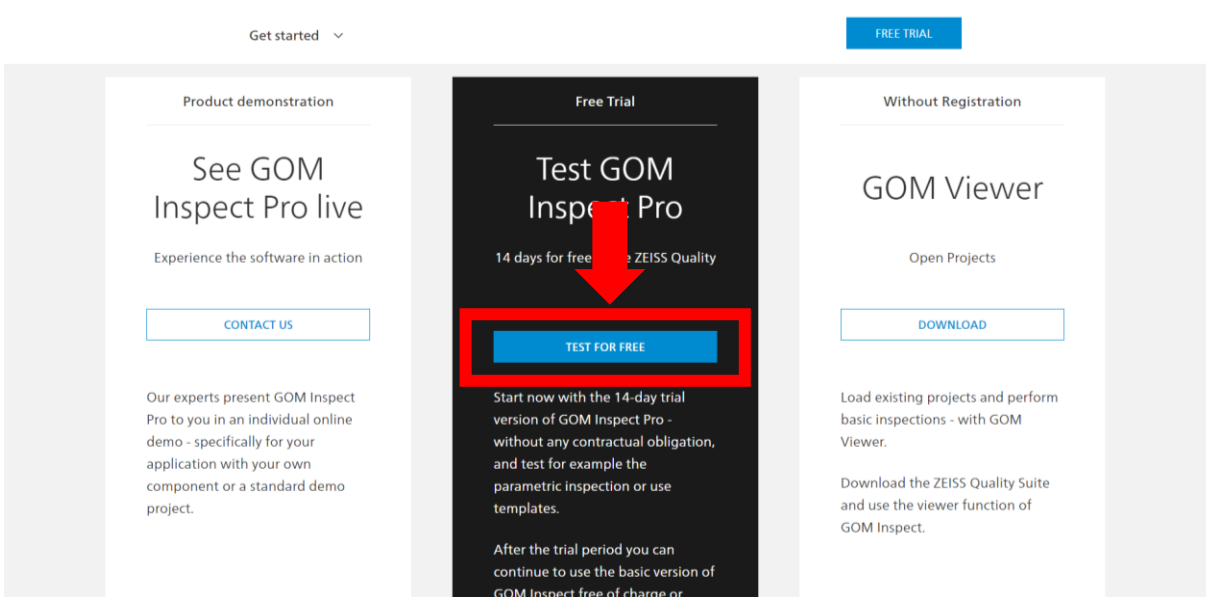
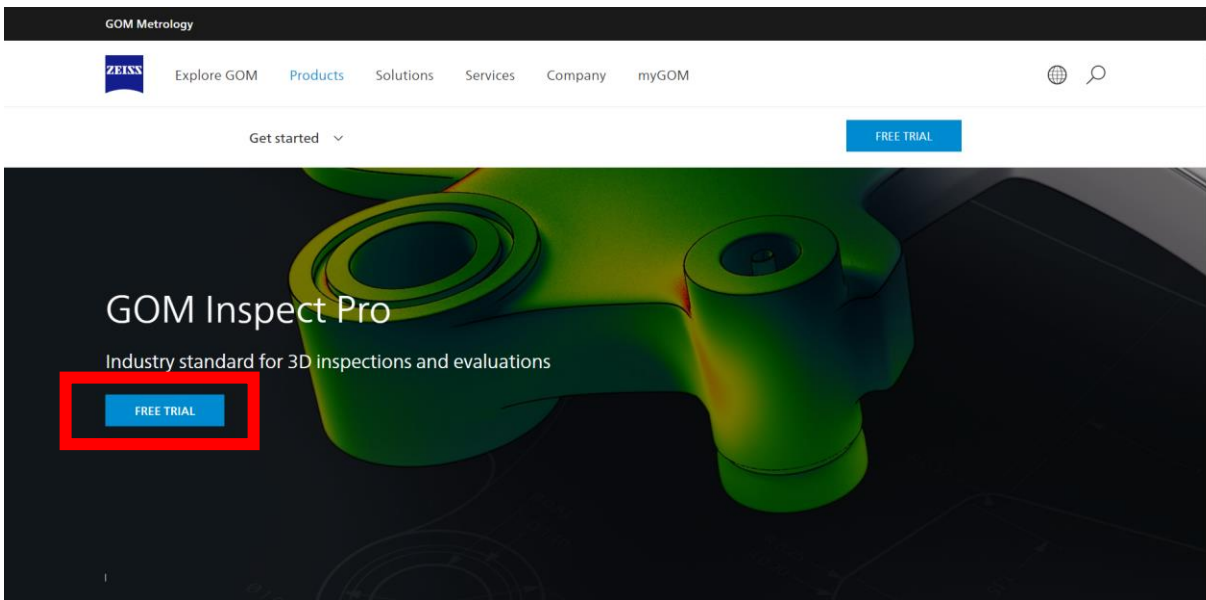
Memory: 4 GB RAM

Video Card: OpenGL-compatible graphics card (NVIDIA Quadro for optimized hardware rendering)

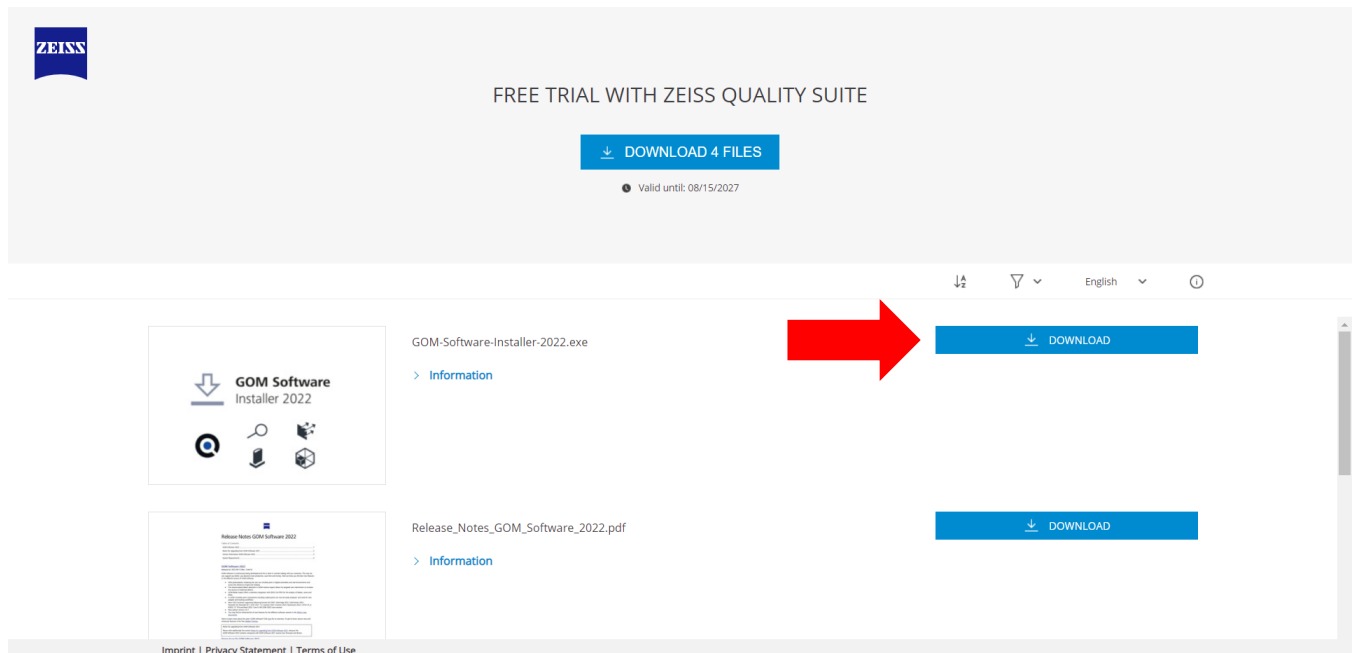
Operating System: Windows 10® (64 bit) with current security updates

Downloading GOM Inspect

1. The download page can be found on the [GOM official website](#) under the Products >> Zeiss Quality Suite >> GOM Inspect Pro link. On this webpage, click on the “Free Trial” button and then click on “Test for Free”



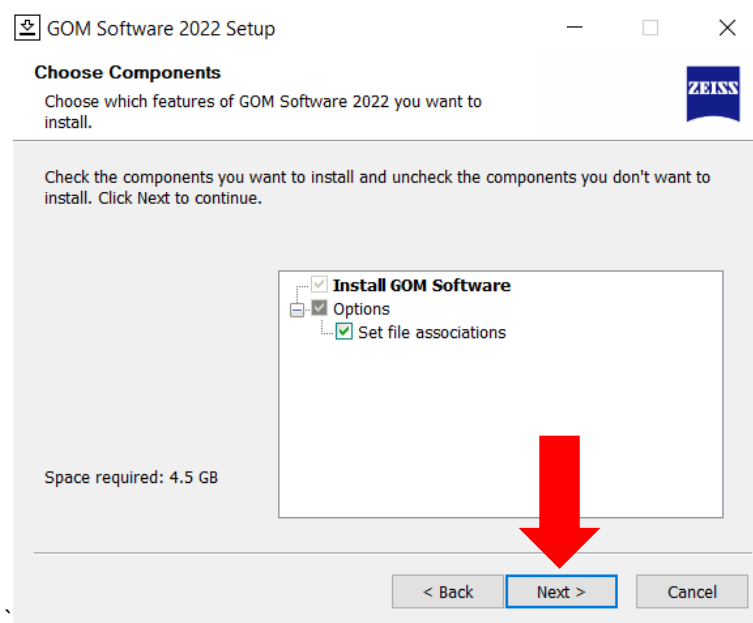
2. Once the “Test for Free” button has been clicked, a page with the installation file download link will appear. The latest version of the software will be automatically selected for download. Click the “Original File” button beside the GOM Software Installer item to initiate the download process.



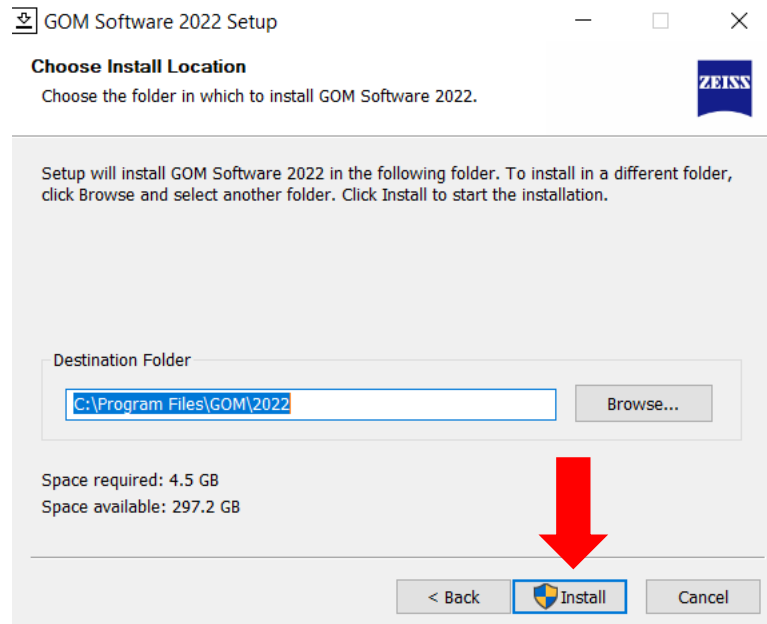
3. The installation file will download through the browser. Once the download completes, run the file to begin the installation process. Administrator access may be required to run the installation.
4. The GOM Suite installer will open. Click “Next” on the first page and accept the terms of the License Agreement. Click “Next” when completed.



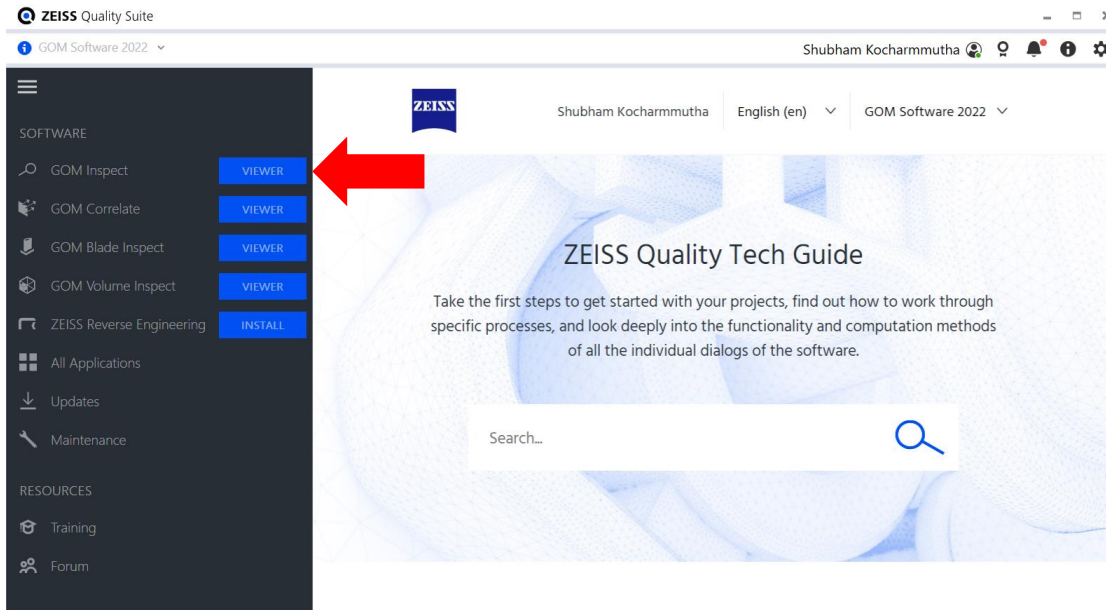
5. A page titled “Choose Components” will appear where the components of the installation can be selected for installation. It is recommended to leave all options checked, then click “Next” to proceed.



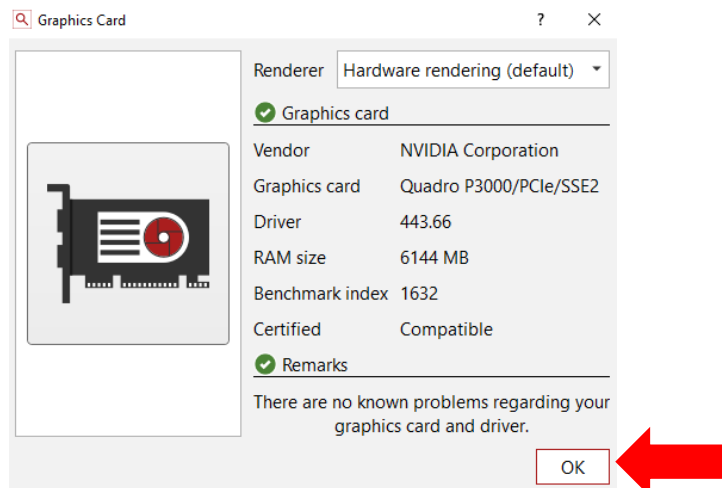
- The installation location can then be specified. The default location of “C:\Program Files\GOM\ (YEAR-VERSION)” will be automatically selected. Click “Install” to begin the software installation.



- The installer will proceed to install the software with the specified options. Once completed, the software can be run by clicking the GOM Suite Desktop icon or selecting it from the Start Menu.
- Upon running GOM Inspect for the first time, the software will prompt for an acceptance of the License Agreement. Accept and click “Continue”.
- Once accepted, you will be greeted with the GOM Suite welcome page. Click on “Viewer” beside GOM Inspect to launch the GOM Inspect software.

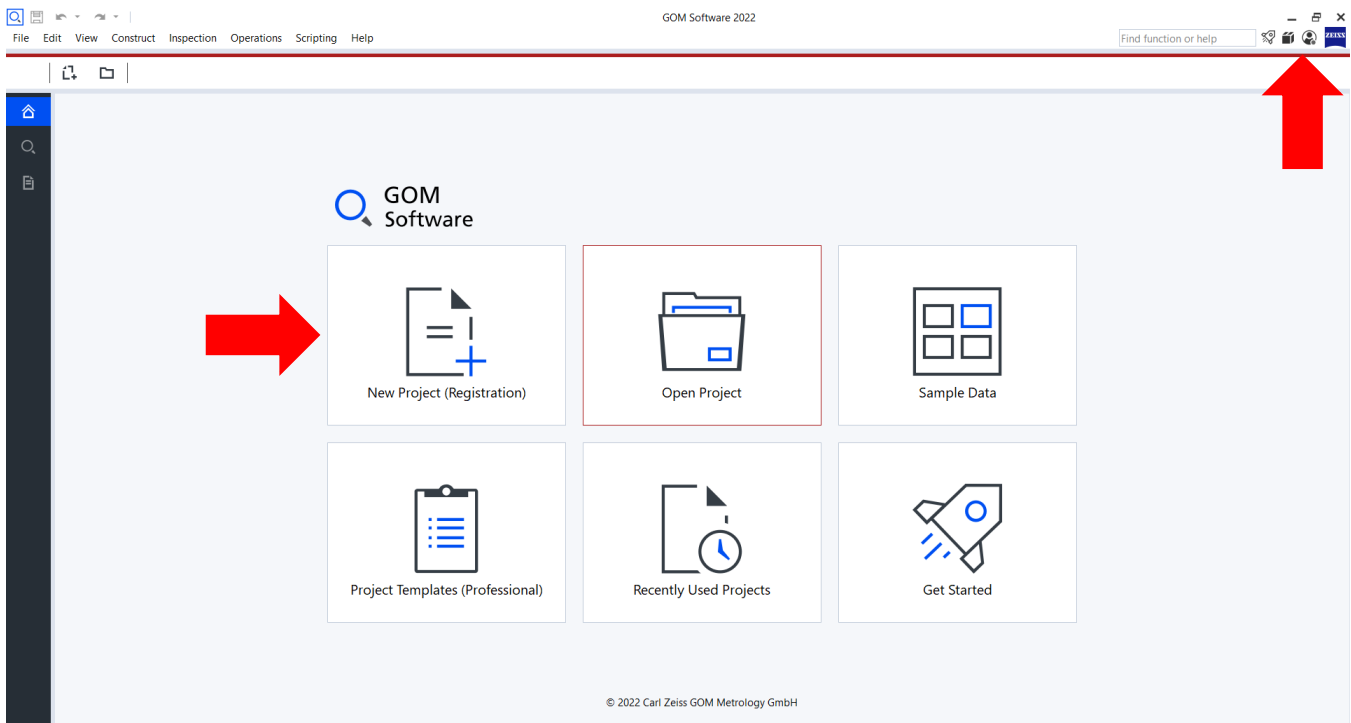


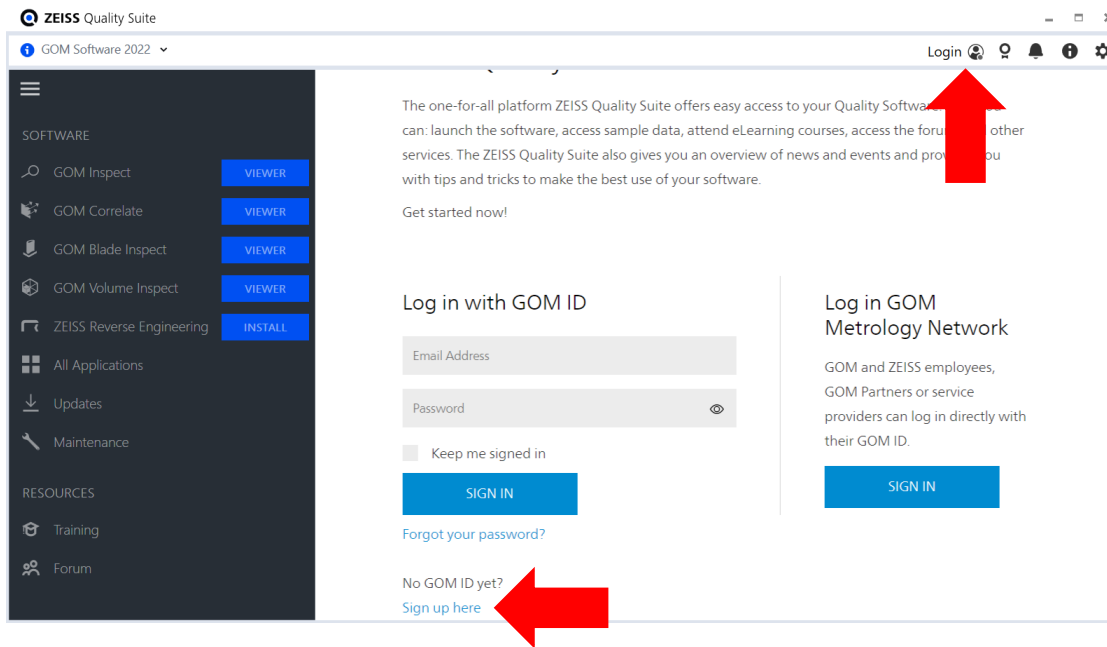
10. The GOM Inspect software will open, and a mandatory graphics card benchmark test must be run. Click “OK” on the prompt, and the software will confirm whether a certified graphics card and driver has been installed or not. To avoid issues while using GOM Inspect, it is recommended to use a certified graphics card with OpenGL support. For more information, refer to the system requirements section.



- Once the benchmark test has been completed, a registered GOM ID will need to be used to log into the software to unlock the free features. A GOM ID can be created for free through the software's login section. This can be done by clicking "New Project (Registration)", then selecting the "Here" button at the bottom of the Direct Help menu that appears.

Alternatively, the user icon (👤) on the top-right corner can be clicked to open the login screen on the GOM Suite welcome page. Select "Sign Up Here" to access the registration page. Registration can also be completed online through the [GOM Registration website](#).





12. Fill in the required information on the Registration page, ensuring that you select GOM Inspect under “Desired Software”, then click “Register” to complete the process. A verification email will be sent to the email address provided upon registration. Once the email has been verified, close the GOM Inspect software and GOM Suite welcome page, then log in using the newly created GOM ID.

Application: [dropdown]
Industry: [dropdown]
Desired software *: GOM Inspect [dropdown]
Email *: [text input] (This value is required)
Confirm email *: [text input]
Password *: [text input]
Confirm password *: [text input]
Newsletter: I would like to receive information about products, services and offers of GOM GmbH and its affiliated companies by email. This consent can be withdrawn at any time at the end of any email.
Privacy Policy *: I read and accept the Privacy Policy of personal data collection and processing (GDPR).

13. When the software restarts, the Viewer version of the software will be unlocked, and the “New Project” command can be used to start an inspection

project. Professional features will remain locked while using the free version of the software.

Free Online Training Course

GOM offers a free eLearning course for users looking for basic training on creating an inspection project. The course, titled “780 Starter Training GOM Inspect (GOM Software 2021) can be found in the [GOM Training Portal](#). A GOM ID is required to log in and access the free content. Additional courses can be found through the Training Portal.

(eLearning) 780 Starter Training GOM Inspect (GOM Software 2021) ★★★★★ (2) 0%

New to GOM Inspect? This free course teaches you the basics: How to navigate the interface and work with the software to inspect parts. It guides you through the inspection workflow from data import all the way to reporting your results. At the end of this course you will know more about the software's capabilities. You will be able to perform simple and dimensional Inspections and create comprehensive reports.
Costs: Free

Note: English subtitles are available in this course. In addition, automatically generated subtitles in Chinese, Czech, French, Italian, Japanese, Korean, Polish, Portuguese, Spanish, Thai and Vietnamese can be enabled as well.

Continue this learning path

Courses ★ Reviews

(eLearning) 780 Starter Training GOM Inspect (GOM Software 2021) EN 0%

- Information about the Course (Starter Training GOM Inspect)
- Download Training Material (Starter Training GOM Inspect, 120 MB, 2021-08-02)
- A | Introduction
- B | User Interface
- C | Data Import

For further questions or to request support, you may contact us through the following options:

- Call our Support Team at 416-213-0533 ext. 1
- Email us at support@cadmicro.com