

Notes

- [01] *A network license or standalone license may be used*
- [02] *The remote machine does not need to be activated. For network license users, no additional flow simulation license will be consumed from the remote machine.*
- [03] *The goal is to have better load times than the local machine. Please ensure that the remote machine is faster than the local machine, as it will be performing tasks that are both CPU- and RAM-intensive.*
- [04] *By default, TCP Port 30950 is used to connect the two machines.*
- [05] *The default flow simulation directory is C:\Program Files\SOLIDWORKS Corp\SOLIDWORKS Flow Simulation*

01

If you are using standalone licensing:

Ensure that your Solidworks and Flow Simulation serial numbers are entered. This will allow you to install Solidworks and the Flow Simulation add-in on both machines. [2]

If you are using network licensing:

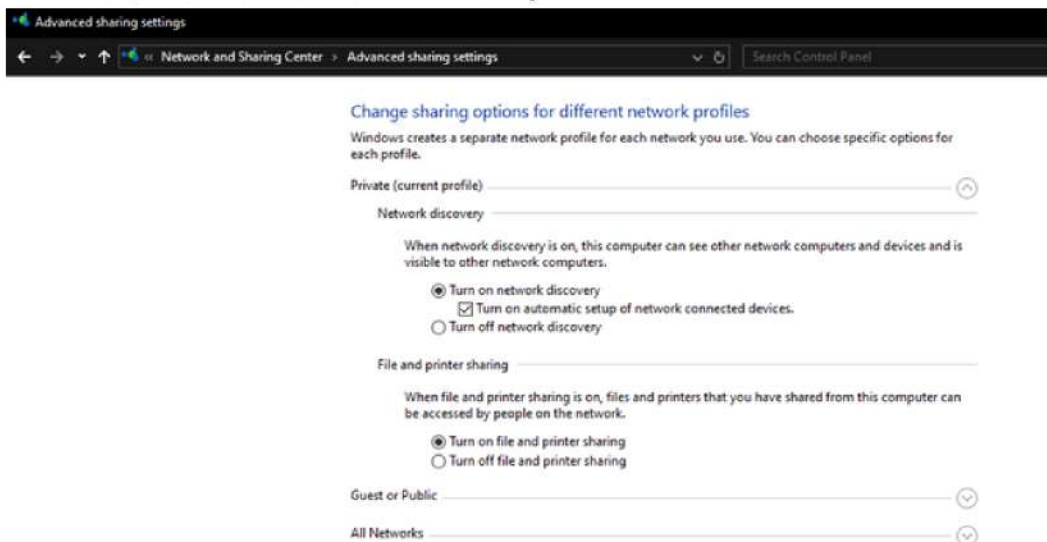
Ensure that your Solid Network License Server contains your Solidworks and PDM Flow Simulation licenses and that both of your machines are connected to the license manager. [2]

02

Ensure that your remote machine is discoverable on your network (Private/Public)

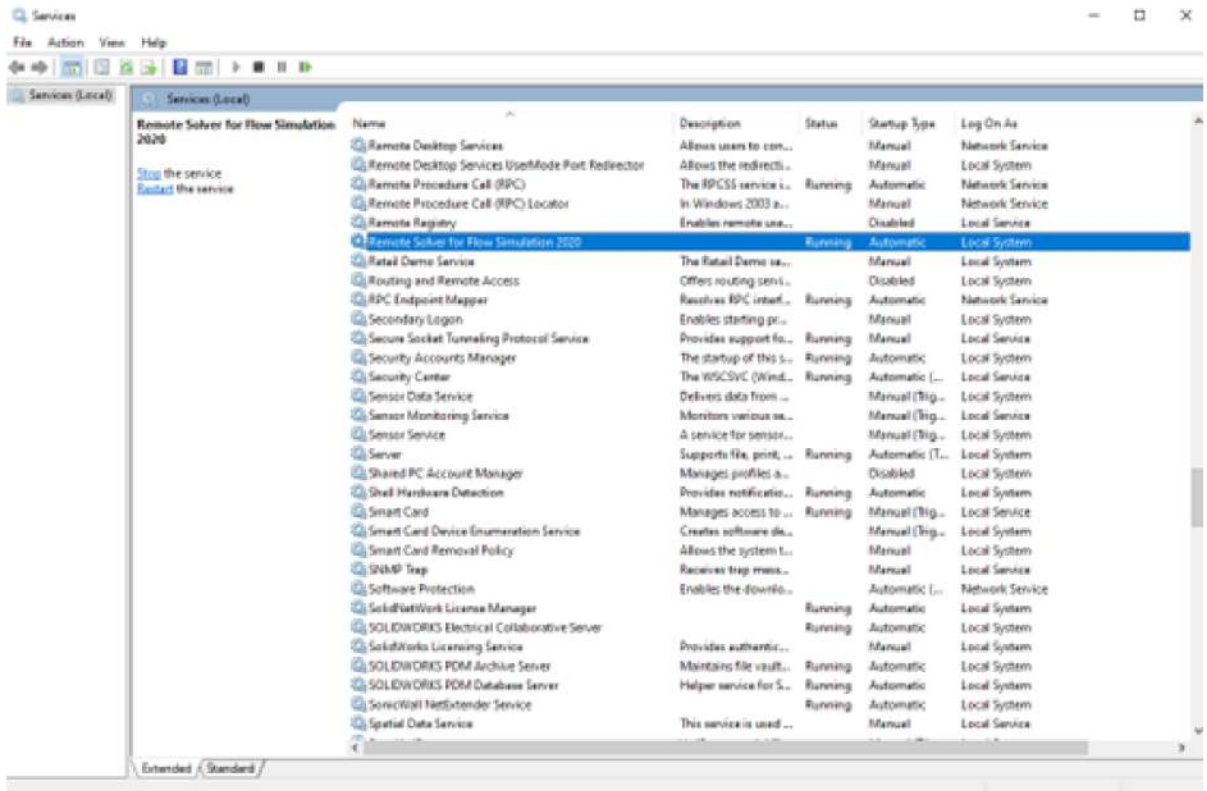
This can be found at:

Control Panel > Network and Internet > Network and Sharing Center > Advanced sharing settings
-> Private/Public "Turn on network discovery"



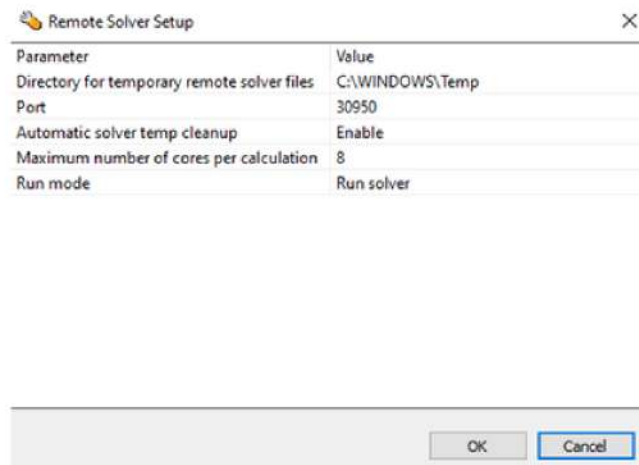
Ensure that “Remote Solver for Flow Simulation 2020” is running on the remote machine. (Restart the service if necessary)

NOTE: Disregard “2020” in the title even if you are not using SW2020.



To set the TCP Port on the remote machine without having Solidworks open on the remote machine, you can navigate to:

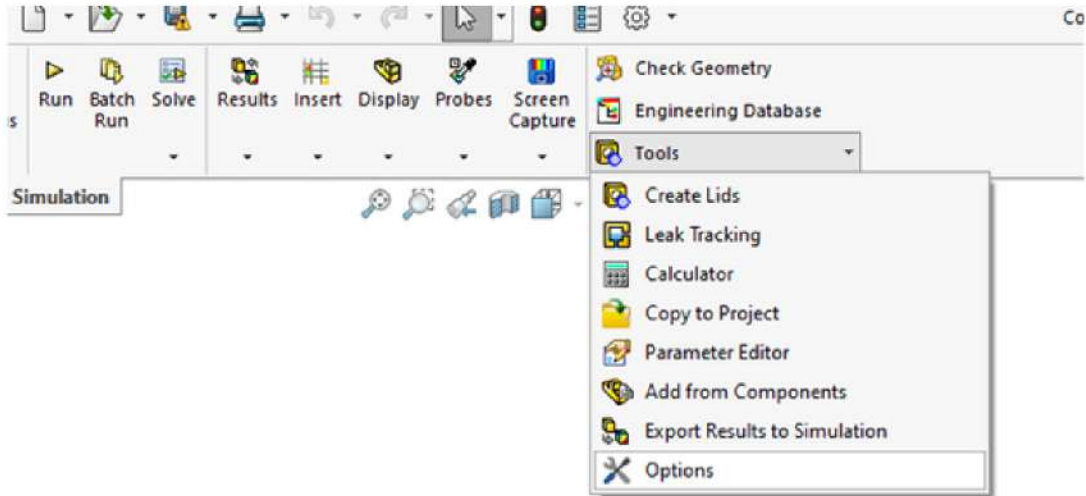
C:\Program Files\SOLIDWORKS Corp\SOLIDWORKS Flow Simulation\binCFW\reg_sasenv.exe



03

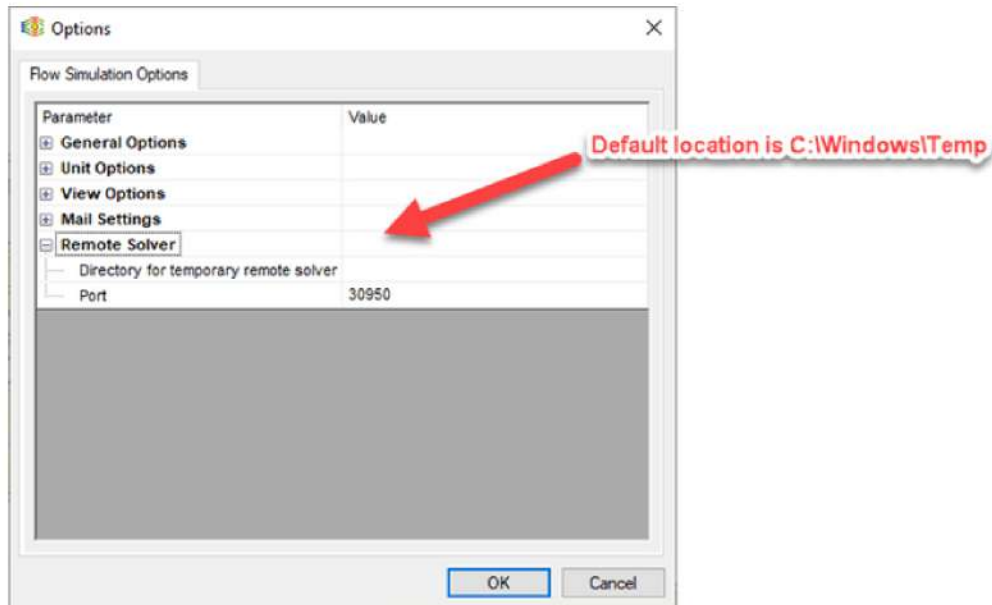
Connect to your remote computer from your local computer in Solidworks Flow Simulation and run your study.

Figure
1A



Configure where you want your solver files to be placed.
Ensure that an unused TCP port is set and open between the two machines [4]

Figure
1B



Step (3.3) – Ensure “Remote Solver for Flow Simulation 20XX” is “Started”.



Figure 2A

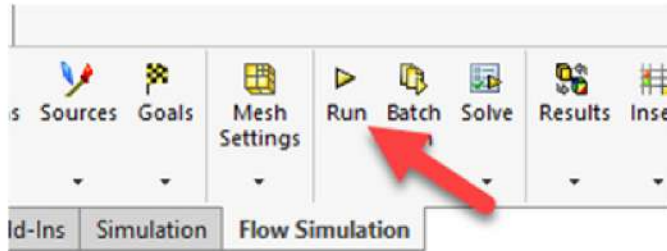
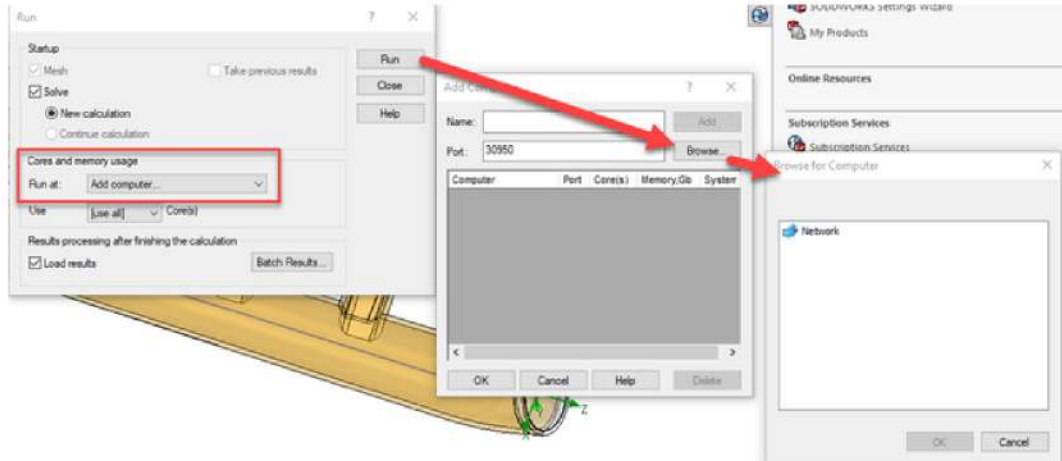


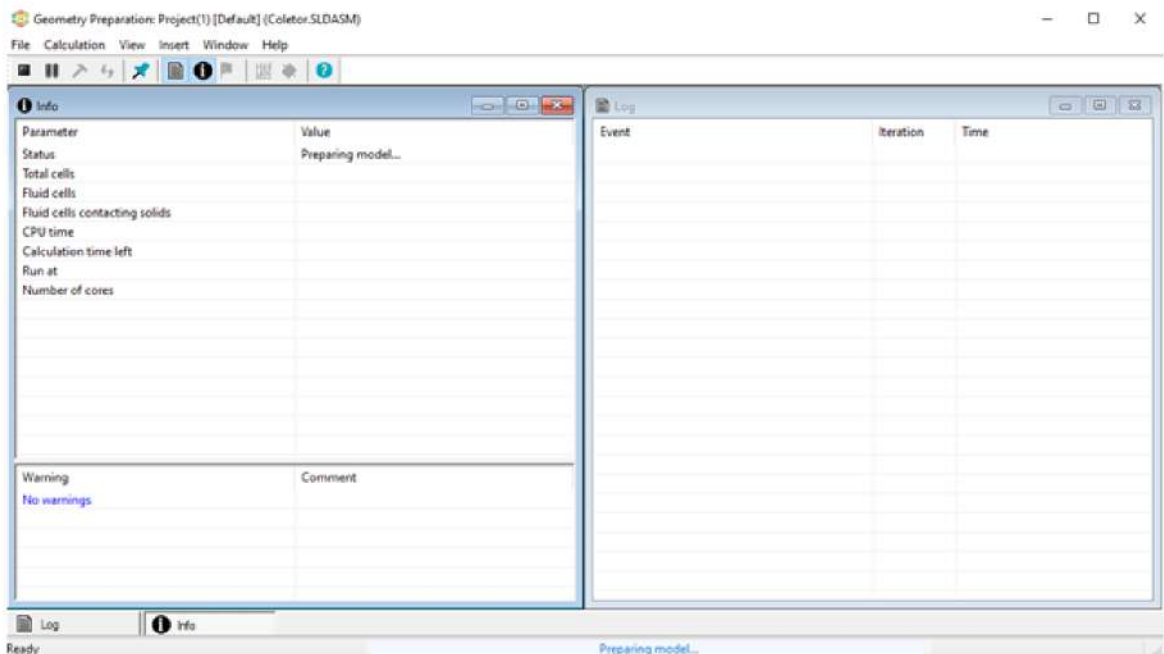
Figure 2B



Upon clicking Run in the command manager in Figure 2A, ensure that “Cores and memory usage” > Run at is set to “Add Computer”.

You may then browse hit the Run button as shown above in Figure 2B for the desired remote machine on your network.

Figure 2B



This should appear upon running the simulation.

