

The background features a blue-tinted image of a person's hands interacting with a tablet. Overlaid on this are various semi-transparent icons representing data management and analytics, including pie charts, bar graphs, a line graph with an upward arrow, a circular progress indicator showing 64%, and a grid of hexagons containing different symbols.

# Future of Data Management Summit

cadmicro  
*3S* SOLIDWORKS

The background features a blue-tinted image of a person's hands interacting with a tablet. Overlaid on this are various technical and data-related graphics: a circular gauge showing 64%, a bar chart with an upward arrow, a pie chart, a hexagonal grid of icons, and several circular progress indicators. The overall aesthetic is high-tech and professional.

# Using Dispatch

# Agenda

What is Dispatch?

---

A Simple Dispatch - Demo

---

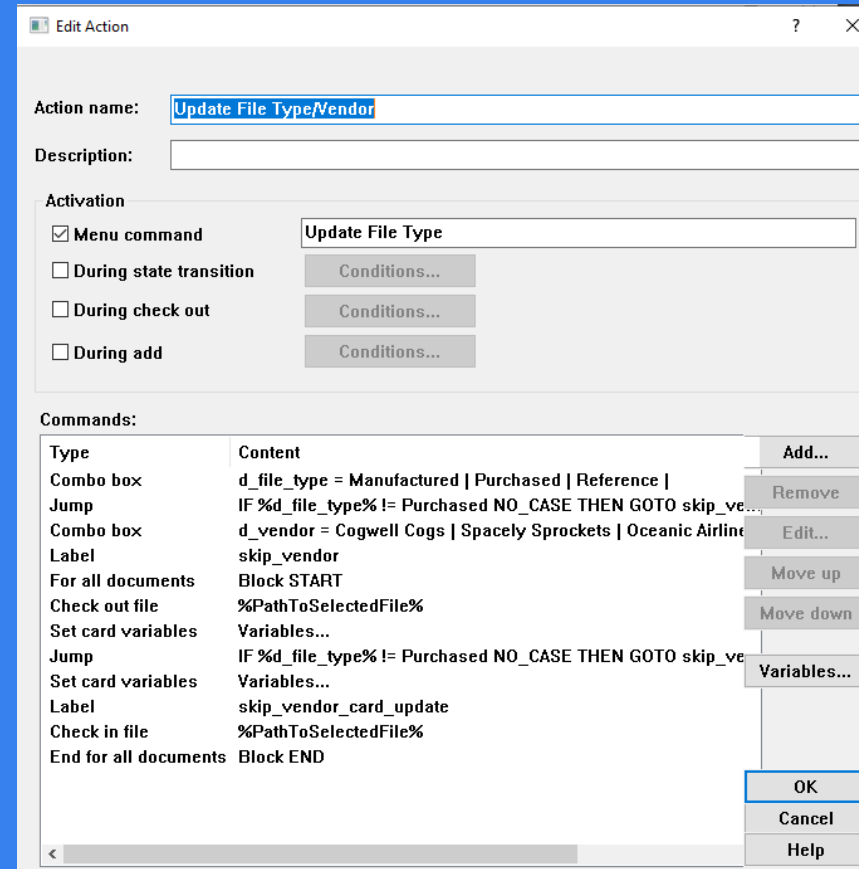
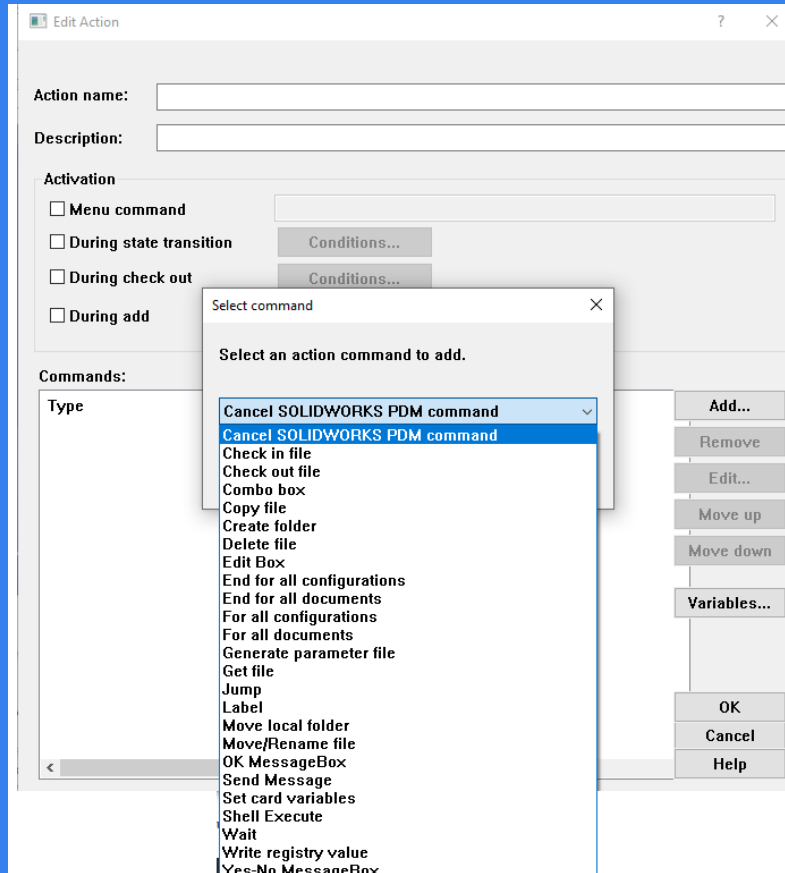
A More Complex Dispatch

---

Resources

---

# What is Dispatch?



Sequence of Execution



cadmicro

The background features a blue-tinted image of a person's hands interacting with a tablet. Overlaid on this are various technical and data-related graphics: a circular gauge showing 64%, a bar chart with an upward arrow, a pie chart, a grid of hexagons with icons, a large circular radar chart, and several smaller circular gauges. The overall aesthetic is high-tech and professional.

# A Simple Dispatch



# More Complex Dispatch

# Resources

---

- **Location:** C:\Program Files\SOLIDWORKS Corp\SOLIDWORKS PDM\Default Data\Dispatch.caf
- PDF Guide: Chapter 6 of Administration Tool\Help\Administration Guide
- Online Help:  
[https://help.solidworks.com/2022/english/EnterprisePDM/Admin/c\\_dispatch\\_overview.htm?id=3b8eb11fc4834b62a7ebde9b6b220579#Pg0](https://help.solidworks.com/2022/english/EnterprisePDM/Admin/c_dispatch_overview.htm?id=3b8eb11fc4834b62a7ebde9b6b220579#Pg0)

# Questions?

...

Stay up to date on upcoming events & webinars!

[www.cadmico.com/events](http://www.cadmico.com/events)

**cadmico**